



**ePowerSwitch-4 IEC** is a Power Distribution Unit (PDU) that enables remote power management of four devices over Intranet, Internet or locally through an RS-232 connection.

Up to 32 rules can be created to automatically control the power outlets for every day of the week, to monitor and automatically reboot IP devices, to trigger actions on other remote ePowerSwitch devices over the Internet and to send alert messages. More than a simple power switch, this device also enables Wake on LAN and its serial interface can be used to trigger a soft shutdown of a server.

This high quality power switch has all its connectors on the front and is the ideal solution for 19" racks and cabinets where the power outlets must be easily accessible. It supports the HTTP, DHCP, SNMP, SMTP, SNMP and Syslog protocols.

### Easy and flexible power management

Management of each power outlet or power outlets group can be done over IP using a web browser or through a Terminal connexion using a KVM switch or a console server.

### IP security

Access is protected by up to 32 character names and passwords and uses digest authentication with MD5 cryptographic hashing to improve the security of the passwords.

### Concurrent access

The unit supports concurrent access of one administrator and up to 40 users having different access rights.

### Wake on LAN (WoL)

The WoL function allows computers to be woken up by a network message.

### Soft shutdown

The serial interface can be used to trigger a soft shutdown of a server with shutdown capabilities.

### Programmable restart and power-up delay

A power-up delay (0-255 seconds) and a restart delay (1-3600 seconds) can be set for each power outlet.

### Sequential power up/down

Sequential power up/down avoids the risk for a power inrush to blow a fuse or circuit breaker in the data centre.

### Remote Triggering

ePowerSwitch-4 IEC can trigger different actions on other ePowerSwitch or VizioGuard devices over the Internet and vice versa.

### Scheduler and Timer

A scheduler with an NTP real time clock enables automatic power management for energy saving.

### IP devices monitoring

To reduce downtimes of your equipment, a watchdog function lets you monitor four IP devices and automatically reboot them in case of lock-up.

### Programmable labels

32-character labels can be used for the device, the power outlets, the user accounts and the programmable rules to avoid confusion during operation.

### Developer facility

Developers can access to a specific page for an easy power management implementation through the network in their own program.

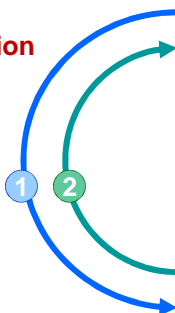
### Easy and fast configuration

Full configuration can be performed using a web browser. The network configuration can also be done over the LAN through an easy to use program for Windows or even through a Terminal connection.

## The Watchdog / Auto-Reboot function

- 1 ePowerSwitch sends a Ping or a Scan request.
- 2 The monitored device acknowledges the request.
- 3 The monitored device is automatically rebooted in case of lock-up.

TCP/IP



3 Power supply



IP devices to monitor

# ePowerSwitch-4 IEC



## Benefits

- Power control of 4 power outlets.
- Remote power management over IP or RS-232.
- Remote triggering of actions on other ePowerSwitch or VizioGuard devices.
- Monitoring of 4 IP devices with automatic reboot in case of lock-up.
- Wake on LAN (WoL).
- Soft shutdown of a server with shutdown capabilities.
- 1 administrator account and 40 users accounts with concurrent access.
- Digest Authentication with MD5 cryptographic hashing.
- Scheduler with NTP Real Time Clock.
- Free definable labels for the device, power outlets, accounts and rules.
- Inrush current relays.
- Easy and fast configuration, occupies only 1U of rack space.
- Status LEDs for power input and power outlets.
- Log file, Emails, SNMP Traps and Syslog messages
- On line help.
- Firmware updateable over the LAN.



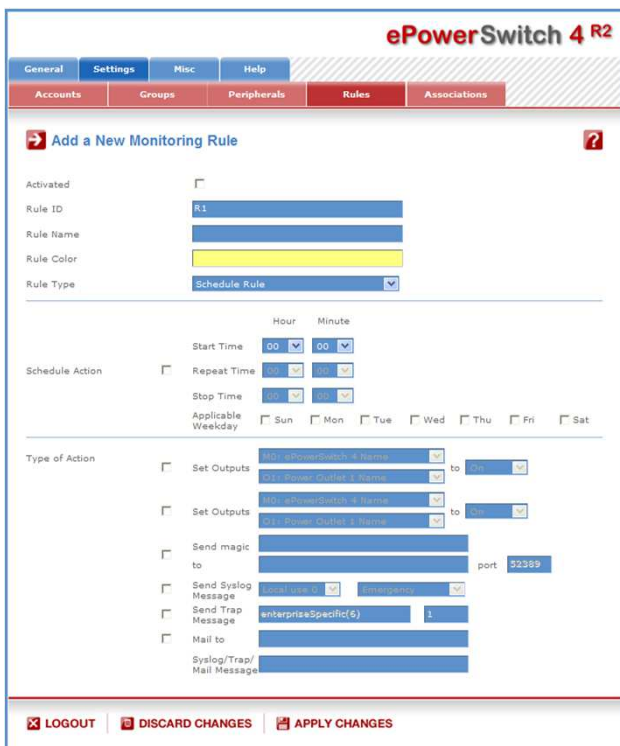
Compact 19" rack mounting case  
All outlets, LED and connectors  
are in front of the device

## What's included

- ▶ 1 EPS-4 IEC
- ▶ 1 power cable, 1.80 m  
Schuko (CEE 7) - IEC320/C13 (F)/ EU
- ▶ 1 serial cable (SUB-D9 male/female) 1,80 m
  - ▶ 1 RJ45 patch cable 1,80 m
- ▶ 1 CD-ROM containing user guide in English and  
Windows IP configuration tool

## Web Pages

The settings for the Web Server and the control of the power outlets are organized by an easy to use set of tabs.

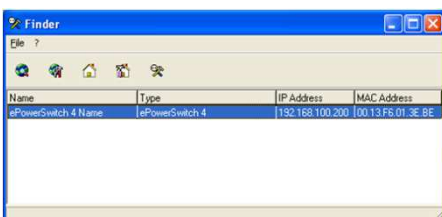


## Technical features

- ▶ 1 power input: IEC-320 EN 60320 C14 (M)
  - ▶ Nominal input voltage: 230 V/50Hz
  - ▶ Maximum current: 10A
- ▶ 4 power outputs: IEC-320 EN 60320 C13 (F)
  - ▶ Output voltage: 230 V/50Hz
  - ▶ Maximum current/outlet: 10A
- ▶ Network standards: IEEE 802.3, 10/100 Mbit/s
- ▶ Network protocols: TCP/IP, HTTP, DHCP, SNMP, SMTP, SNMP and Syslog
  - ▶ Network connection: RJ-45 for UTP CAT5
- ▶ Max. network cable length: 100 m (not included)
- ▶ Terminal connection: RS-232, SUB-D 9 female
  - ▶ LED's: Power Supply, 10/100 Mbits/s  
Network traffic and Power Outlets status
- ▶ Operating temperature: 0°C to + 40°C
  - ▶ Operating humidity: 10% to 80%
  - ▶ Dimensions: 478 x 62 x 49 mm
  - ▶ Weight: 1,3 kg
- ▶ Approvals: CE, EN55022 & EN55024, RoHS
  - ▶ Guarantee: 2 years, repair or replace

## Convenient Windows configuration tool

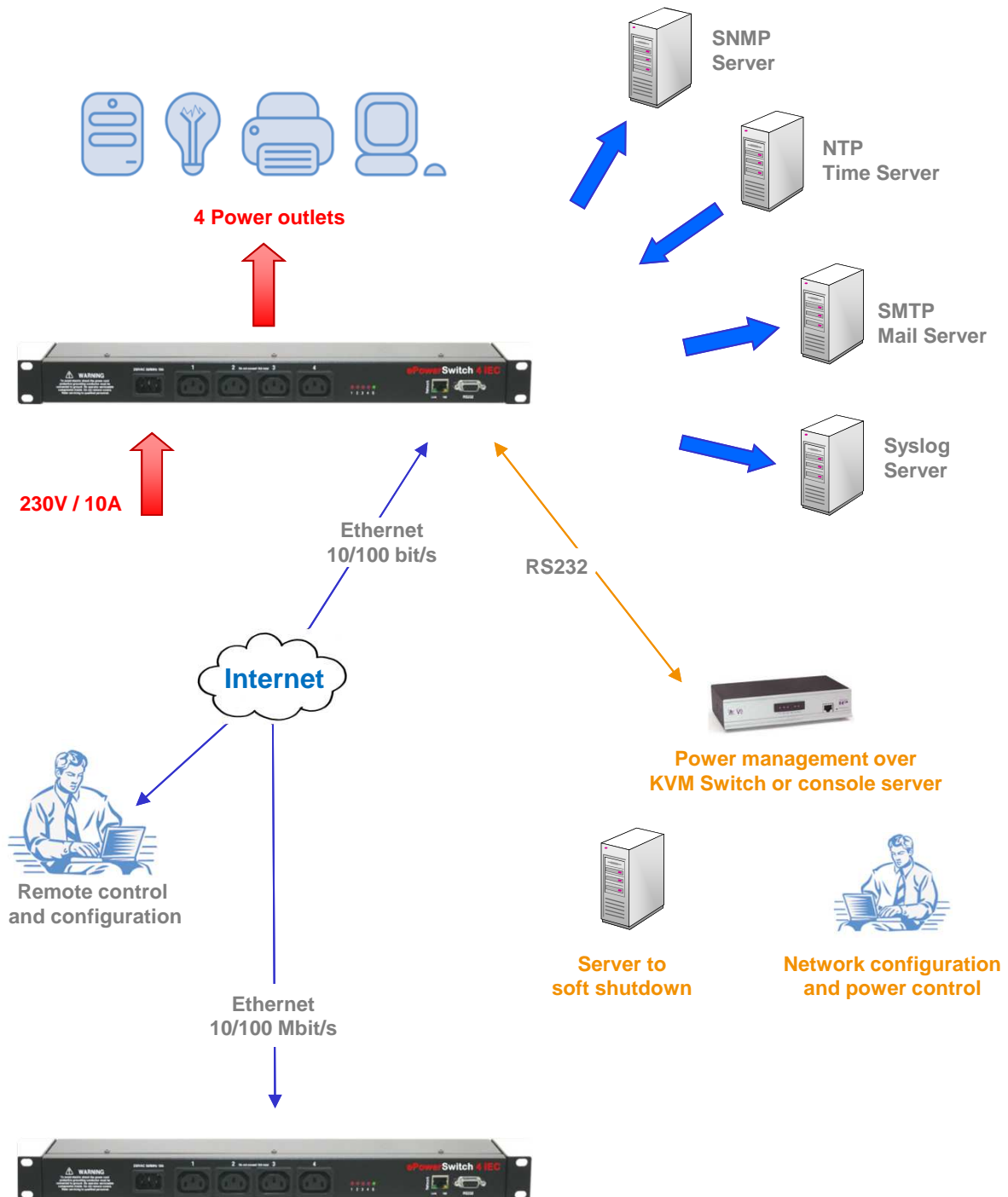
Finder for Windows provides an easy and quick way to configure the Network parameters of your device.



Distributor :

# ePowerSwitch-4 IEC

## Diagram



ePowerSwitch-4 IEC can trigger rules on other ePowerSwitch or VizioGuard devices over the Internet and vice versa.